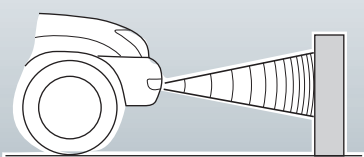


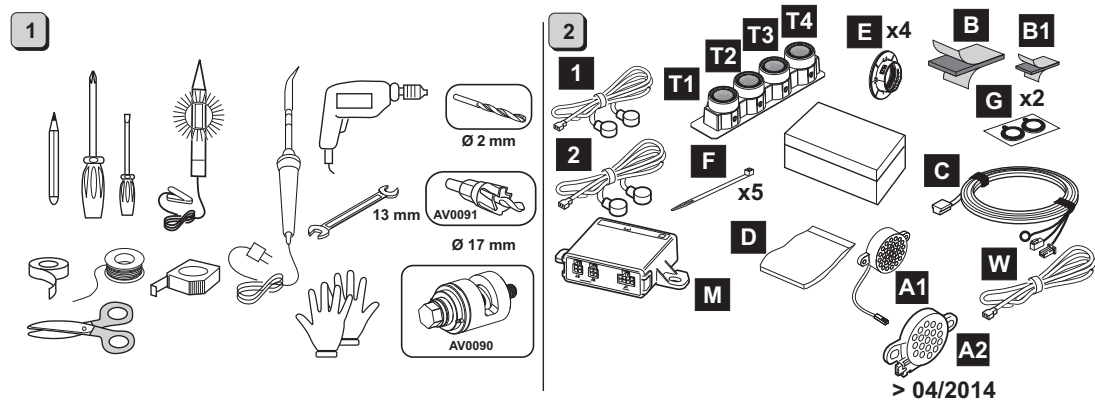


PARK MASTER FRONT F394

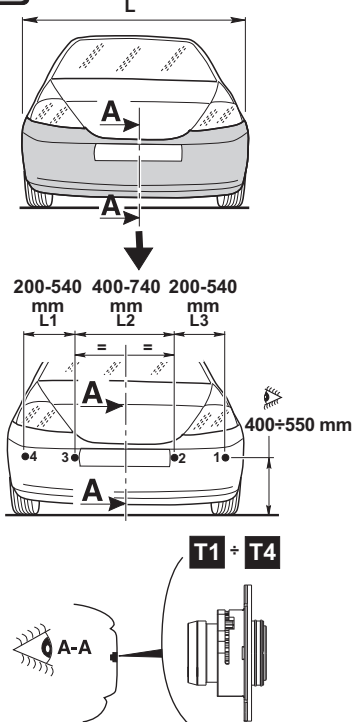


Cod. 06DE3787D date 11/2013

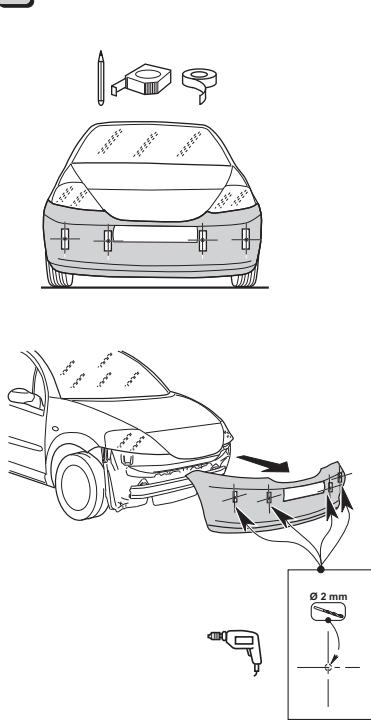
Cobra Automotive Technologies
via Astico 41 - 21100 VARESE - ITALY
www.cobra-at.com



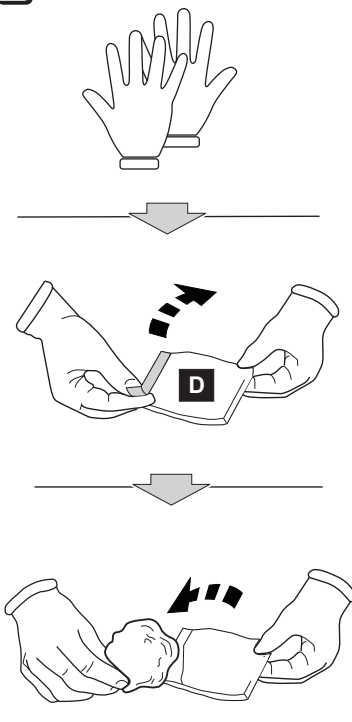
4 Typical Installation



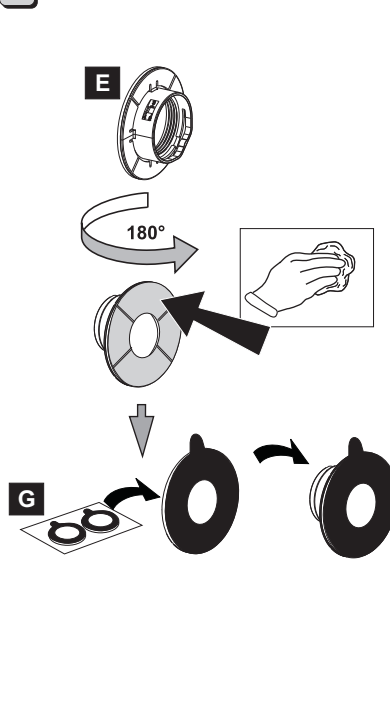
5



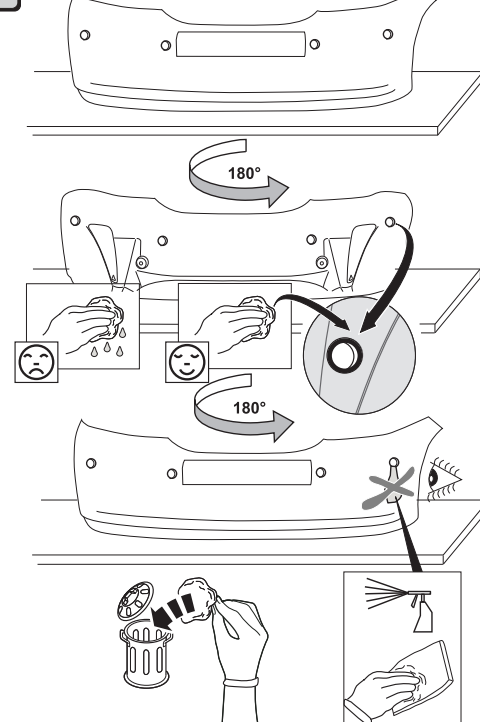
6



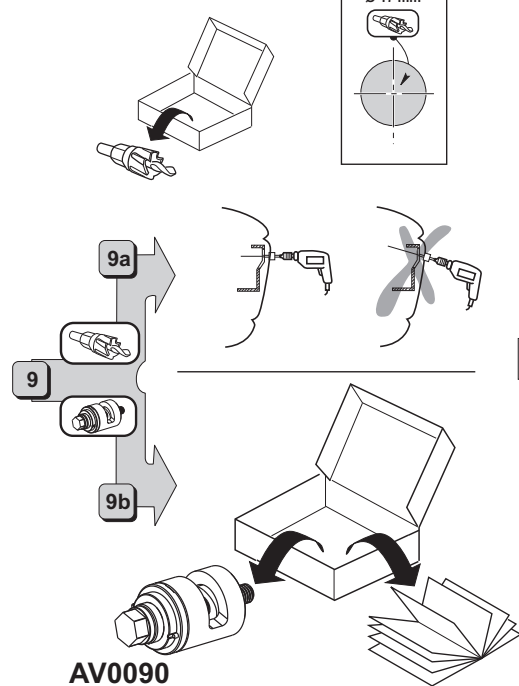
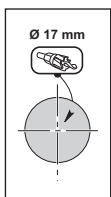
7



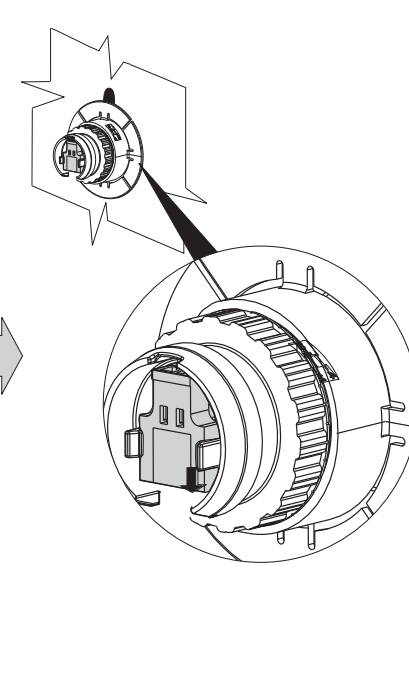
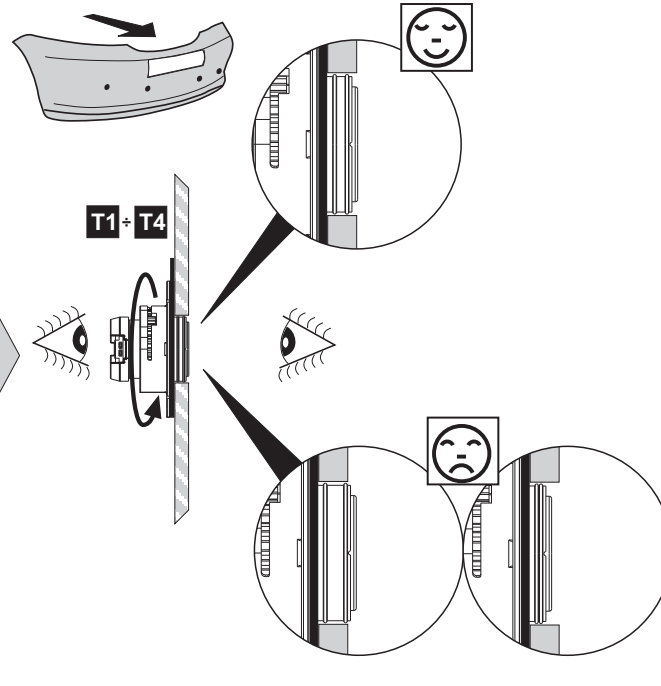
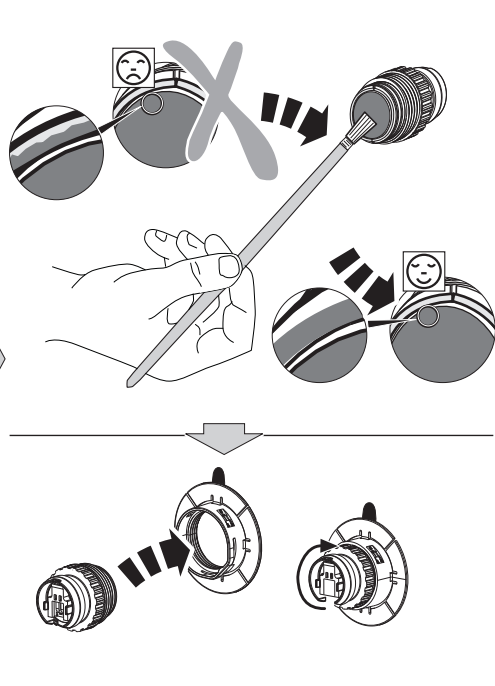
8



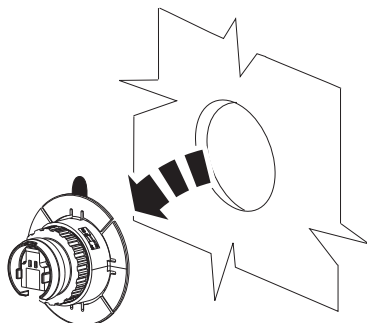
AV0091



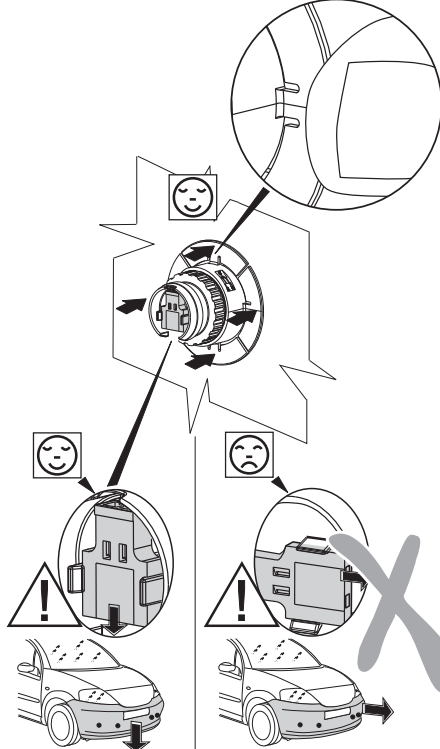
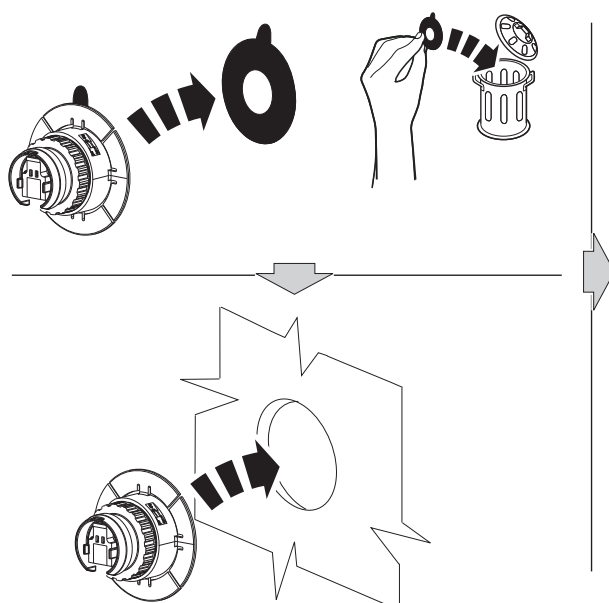
AV0090



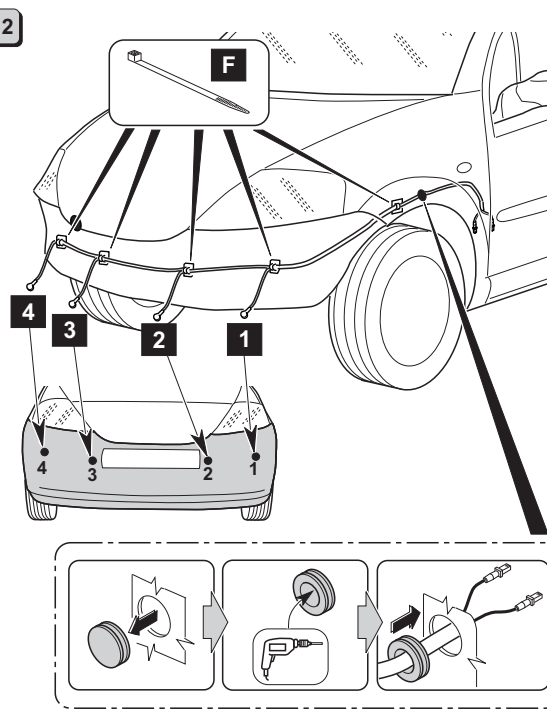
10



11

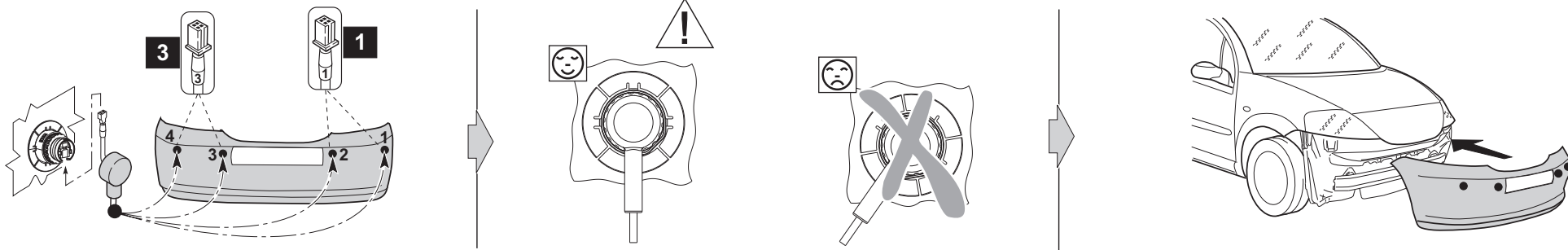


12

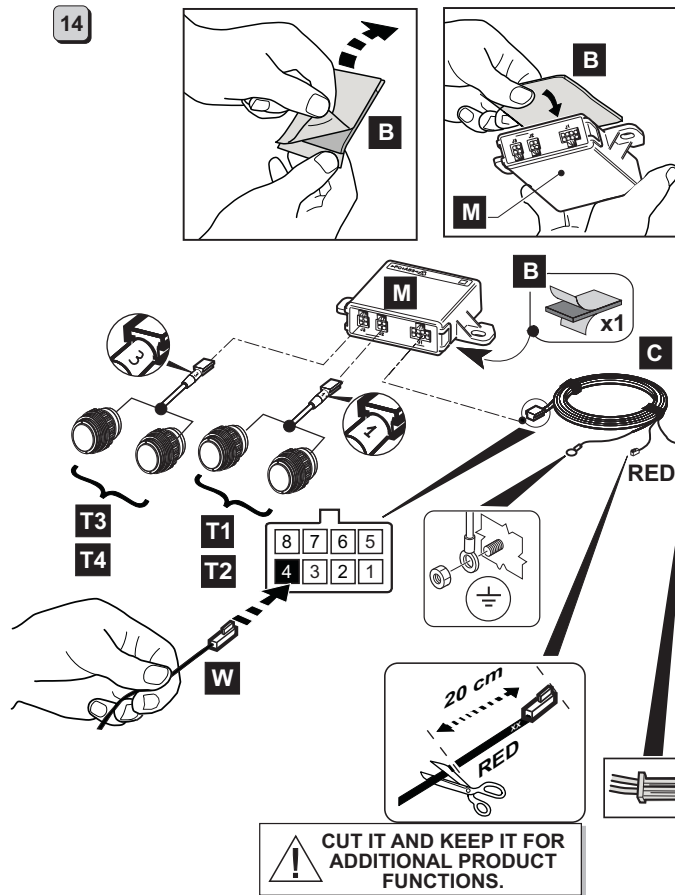




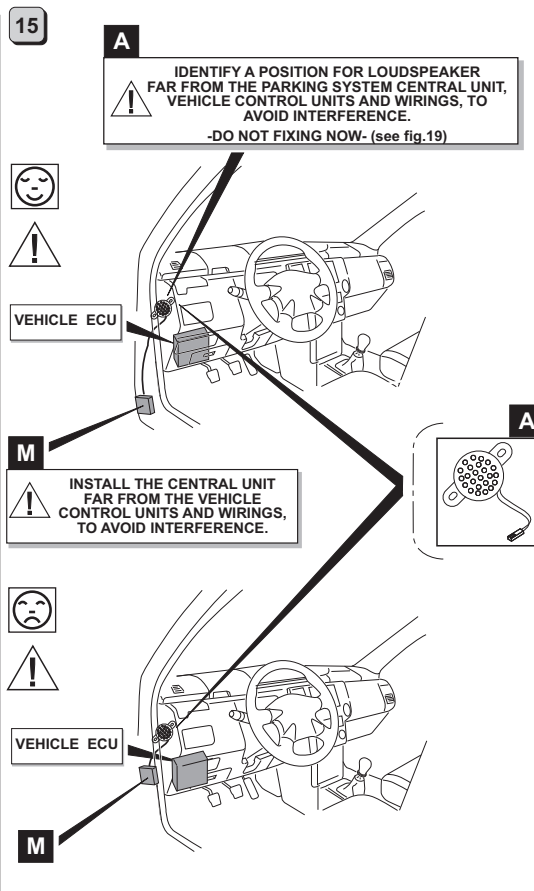
13



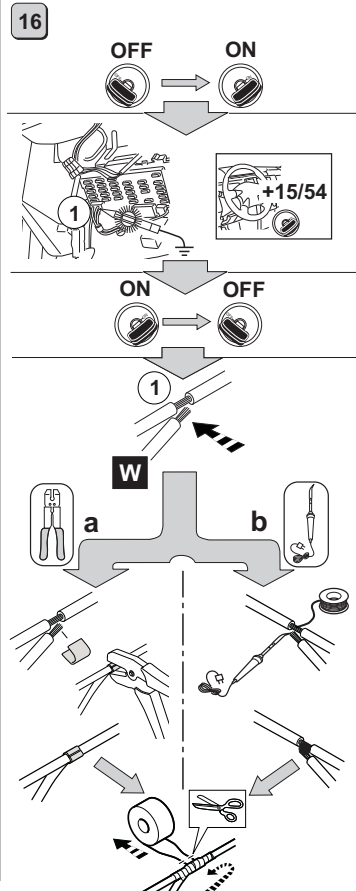
14



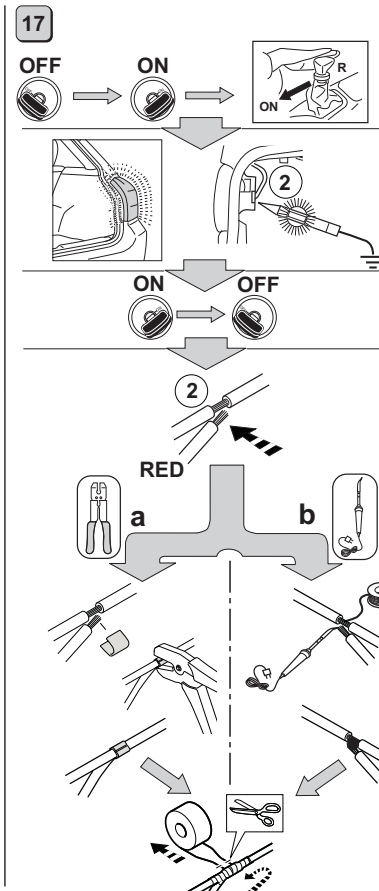
15



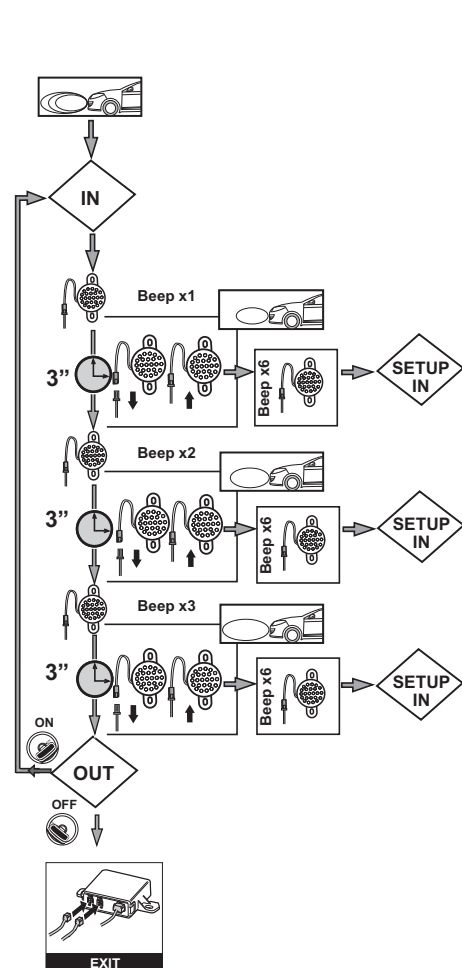
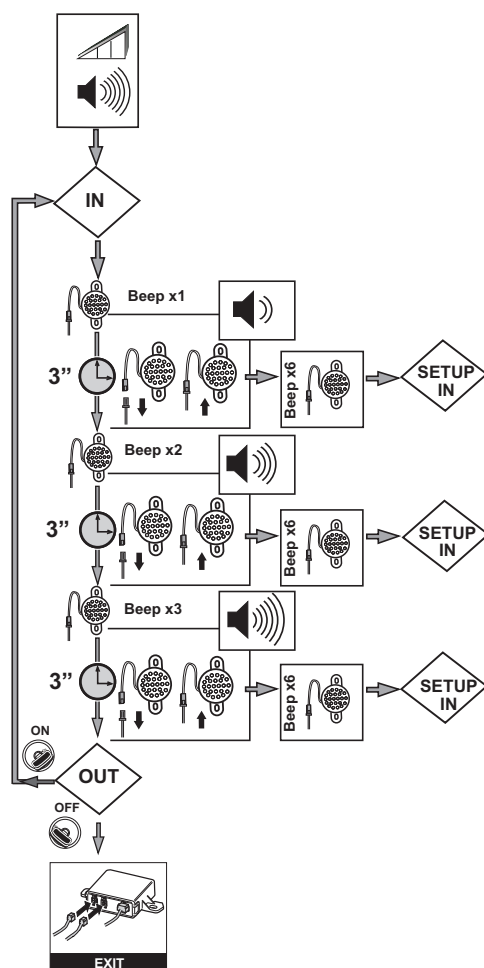
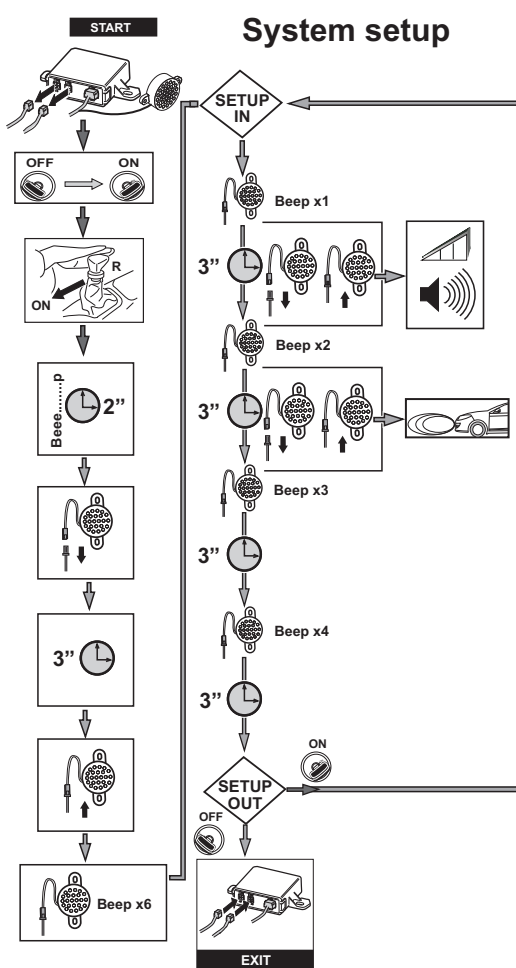
16



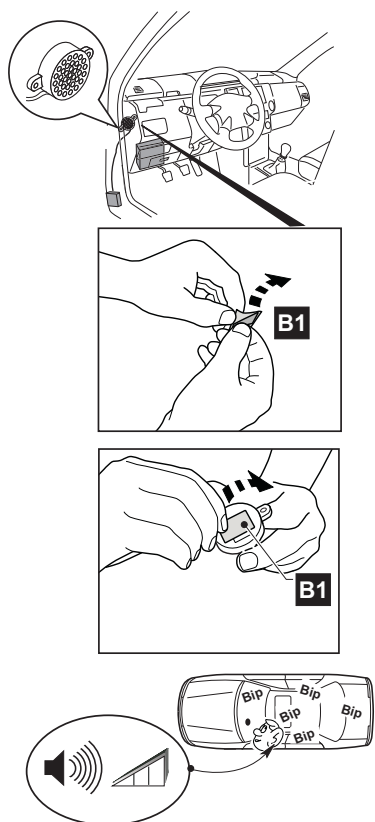
17



18

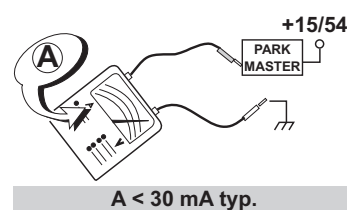
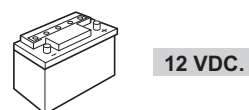
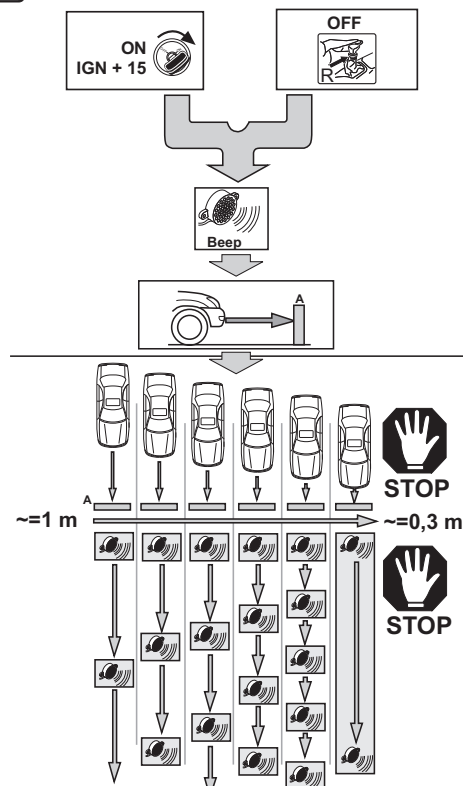


19



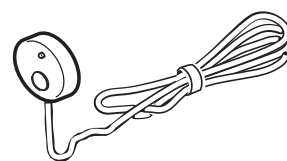
20

System functionality



ELECTRICAL/ELECTRONIC SUB-ASSEMBLY WAS APPROVED WITH REGARD TO E/CE/324-E/CE/TRANS/505 Add 9/Rev.3 Regulation No. 10 UNIFORM PROVISIONS CONCERNING THE APPROVAL OF VEHICLES WITH REGARD TO ELECTROMAGNETIC COMPATIBILITY.

Activation / Deactivation push button.
Order: RV3608EUSAA
(If not contained in the kit)



FOR ADDITIONAL FUNCTIONS SEE "INSTALLATION AND CONFIGURATION GUIDE" ON COBRA SITE.